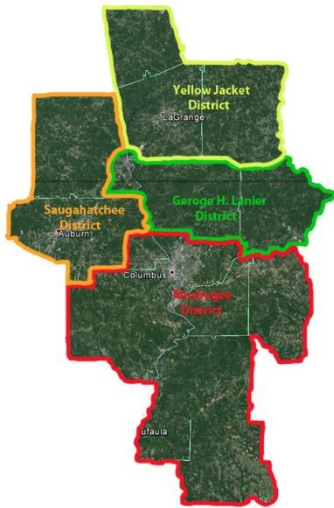




BOY SCOUTS OF AMERICA®
CHATTAHOOCHEE COUNCIL



2017 Family Friends of Scouting

15 Counties in
Alabama and Georgia

4 Districts

54 Cub Scout Packs

49 Boy Scout Troops

4,959 Youth

1,076 Adult Leaders

CAMP GALLANT

Facilities

Tent Camp Sites
Car Camping Sites
Bathrooms

Programs

Freeze-O-Ree

CAMP PINE MOUNTAIN

Facilities

50 Acres
Tent Camp Sites
Historical Buildings
Bathrooms
Hot Showers
New Archery Range

Programs

Adult Leader
Training
Cub Family
Campouts

CAMP FGL

Facilities

\$650,00 in
improvements
New Waterfront
New Edelson Sports
Complex
Jr. Olympic Pool
Fort Bradshaw
And more....

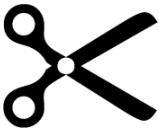
Programs

NYLT
Summer Camp
Wood Badge

Family Friends of Scouting


100% of the proceeds go to support your camp properties.

\$248,313 Income from Camps	-	\$394,916 Expenses Associated with Camps	=	-\$146,598 Operational Shortfall from Camps
--	---	--	---	---



-\$146,598 Operational Shortfall from Camps	By 2/3 =	\$97,732 Campaign Goal
---	----------	----------------------------------



-\$48,866 Operational Shortfall When We Reach Goal	=	
---	---	--



=



Benefits of Scout Camps on Your Son



**Strong Personal Values
and Character**



Positive Sense of Self-Worth



**Nurturing Relationships with
Parents**



© Can Stock Photo

A Desire to Learn



k18314249 fotosearch.com ©

Productive Use of Time



Social Adeptness

How you can help.... Become an “Operational Partner”

Friends of Scouting “Operational Partners” are those who make a three-year commitment to the financial support of camp operations through the Family Friends of Scouting Campaign. There are three levels of operational partners.



Baden Powell Partner \$3,000 over 3 years

(\$1,000 per year - \$100 per month*)

A framed set of camp patches

Name on Operating Partners Board at both Camps



William D. Boyce Partner \$1,500 over 3 years

(\$500 per year - \$50 per month*)

Full set of camp patches

Name on Operating Partners Board at both Camps

Character Partner \$1,000 over 3 years

(\$333 per year - \$33 per month*)

Back Patch and four camp patches

Name on Operating Partners Board at both Camps

Other levels of giving. The levels below are one time gifts.

Leadership Investment \$250 – Three camp council shoulder patches and a round Family FOS patch

Family Investment \$125 – Two camp council shoulder patches and a round Family FOS patch

Scout Investment \$50 – One camp council shoulder patch and a round Family FOS patch

Gifts under \$50 – Round Family FOS patch

*Monthly payments are based on a 10 payment cycle. Pledges made after February will be billed the appropriate prorated amount to ensure final payment is made by December 31st.